

Reimagining Tailings Management: What can digital tools offer?

ICMM / MIT Global Tailings Summit, 19-20 Sept 2024

Jan Kwak

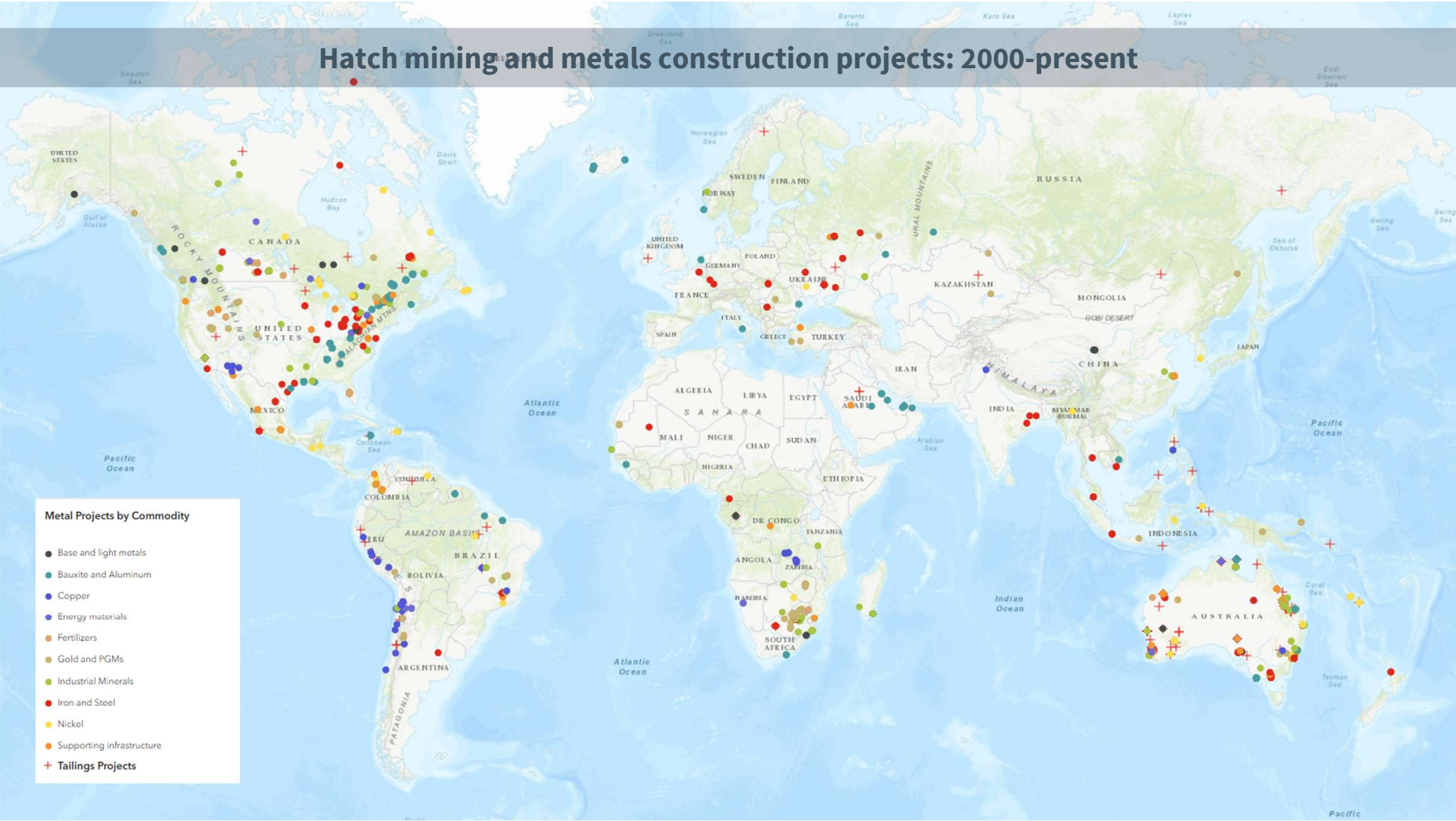


Jan Kwak
Ing, FAusIMM

Hatch mining and metals construction projects: 2000-present

Metal Projects by Commodity

- Base and light metals
- Bauxite and Aluminum
- Copper
- Energy materials
- Fertilizers
- Gold and PGMs
- Industrial Minerals
- Iron and Steel
- Nickel
- Supporting infrastructure
- + Tailings Projects



Integrated Tailings Management Solution

Hatch has developed a holistic Tailings Management Solution for mining companies worldwide. It provides users with integrated, intelligent, and timely insights and actions designed to:

- Increase the safety and reliability of tailings facilities
- Improve the operational effectiveness and efficiency of teams
- Enhance the speed and integrity of governance and compliance
- Help maintain social license to operate



Operational Water Management



Auditing & Governance Standards



Geospatial Data Management



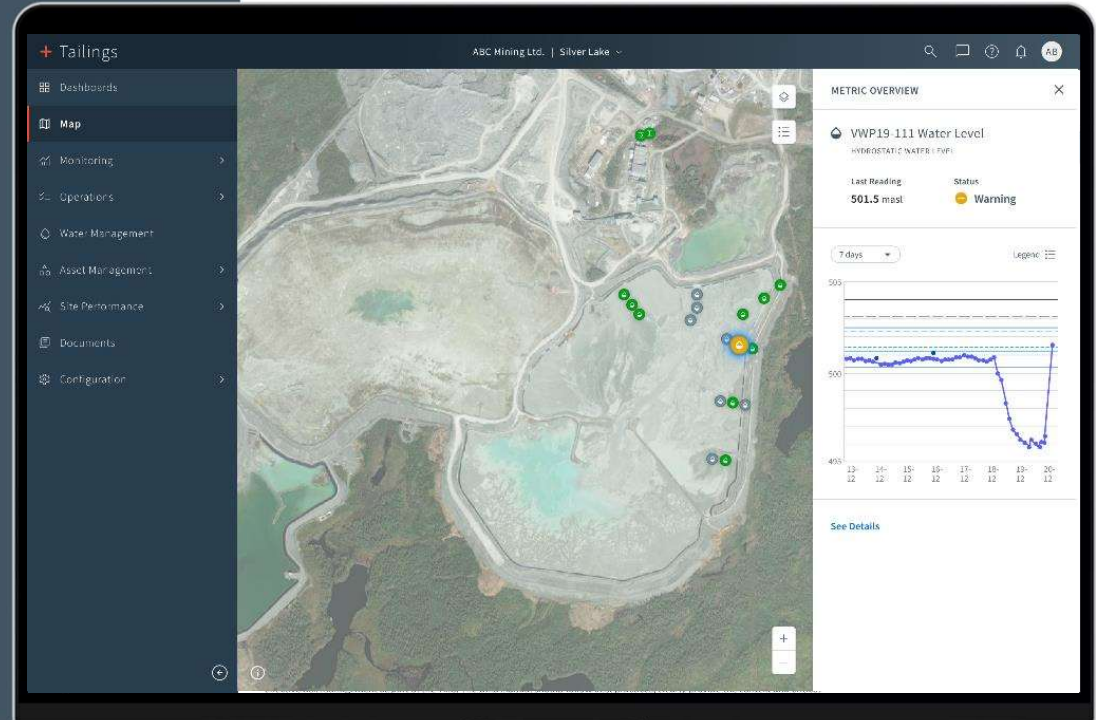
Integrated Monitoring



Operational Management



Anomaly & Change Management



HATCH

Risks Faced by Tailings Facilities



Where are we now in 2024? - Challenges



Multiple systems manage tailing processes.



Integration gaps fragment processes.



Dispersed data hinders comprehensive tailings oversight.



Digitization gaps lead to data quality risks



Decision-making and information flow delays.



Manual data collection lacks integration.



Absence of spatial data on tailings deposition.

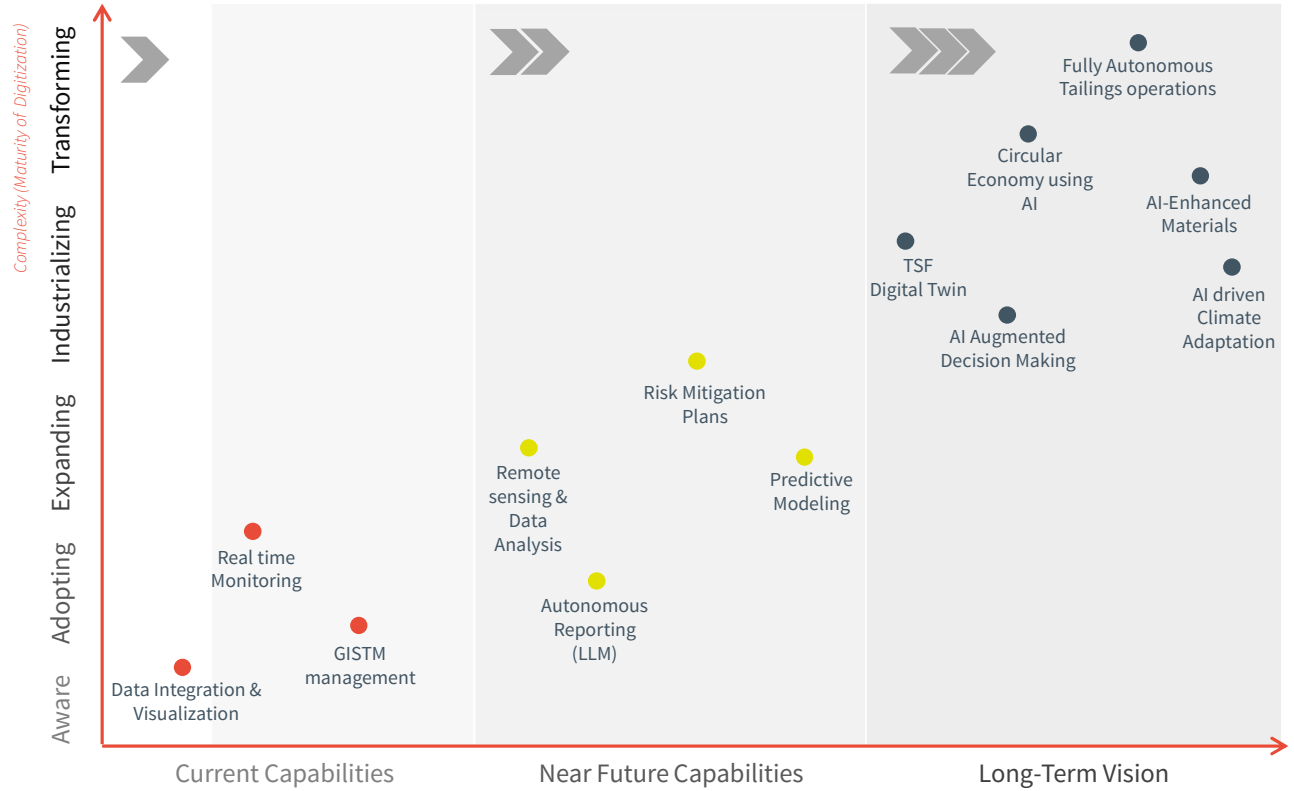
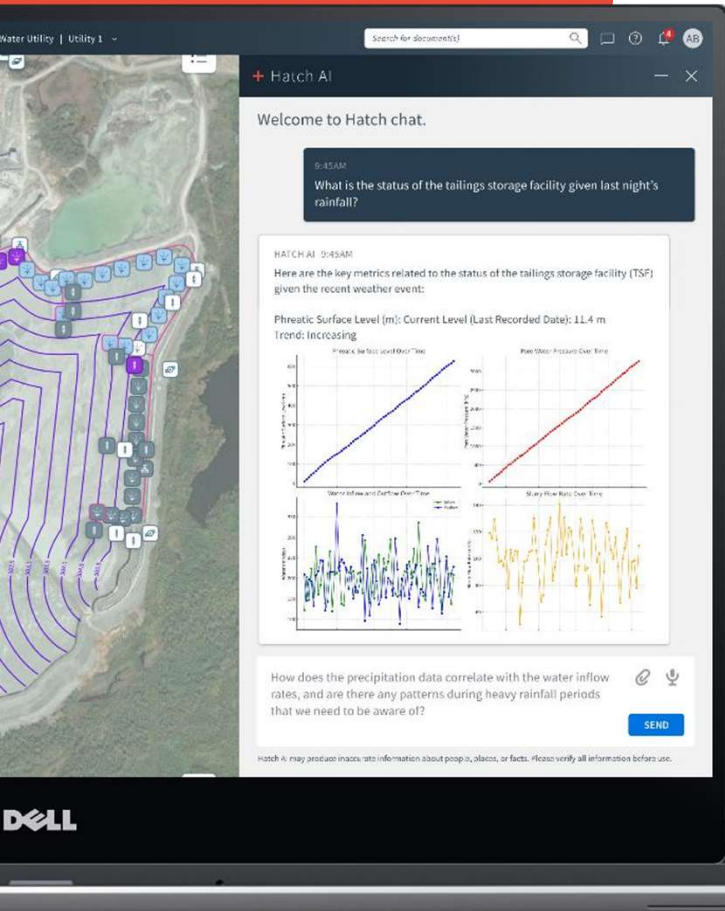


Monitoring data analysis is time-intensive.



Historical data consolidation is insufficient for design and operation.

Future Tailings Operation – V1



HATCH

Conclusion



Human-Machine intelligence: ML assisting experts in decision making, risk identification, deposition management, reducing errors and most importantly – Saving time!



Greater Transparency: Succinct presentation of data to public to allow for better transparent and to demystify tailings facility operation.



Intelligent and Fail-Proof Systems: Robust systems that minimize errors.



Safety and compliance: Ensuring the highest safety standards



+ Thank you

For more information, please scan the QR code

Jan.Kwak@hatch.com

Geoff.McConnell@hatch.com

Rafael.Davila@hatch.com



HATCH